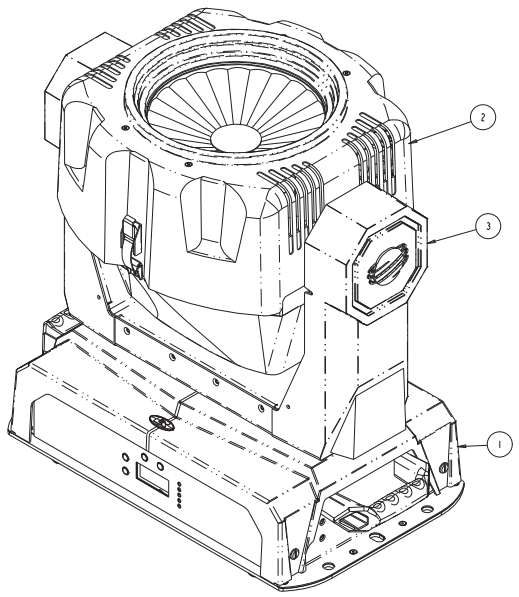


KSAD01

REV.	DESCRIPTION	DATE	ENG	ECO #	APPR



ITEM NO.	QTY.	FILENAME	PART NO.	REV	DESCRIPTION
3	1	KSAD03	NA	1	YOKE ASST, TOP LEVEL S-CMD
2	1	KSAD04	NA	1	ASSY, HEAD, COMPLETE, S-CMD
1	1	KSAD02	NA	2	ASSY, ELECTRONIC ENCLOSURE, S-CMD

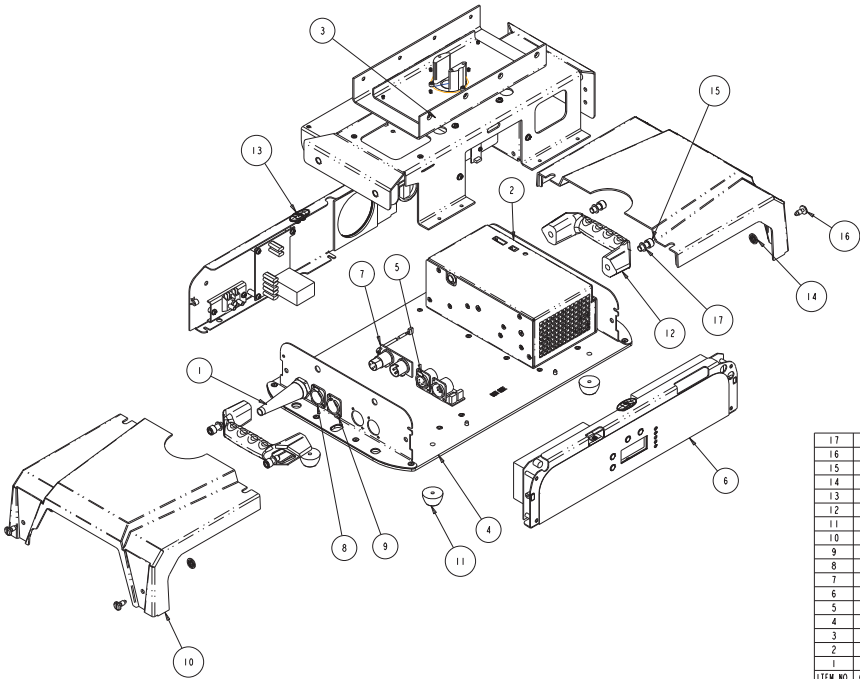
BILL OF MATERIALS

UNLESS OTHERWISE SPECIFIED	RELEASE DATE:	CEL:	 2105 GRACY FARMS LANE AUSTIN, TEXAS 78758 (512) 836-2244 FAX (512) 837-4128 http://www.highend.com	
DIMENSIONAL TOLERANCES:	ENG:	DA:		
0 PLACE DECIMAL = ±0.38	ME:	DRW:		
1 PLACE DECIMAL = ±0.13	MEG:			
2 PLACE DECIMALS = ±0.13	DESCRIPTION:		ASSY, TOP LEVEL S-CMD	
ANGLES = ±0.5°	FOR PAINTED PARTS REFER TO		MATERIAL:	
ENG. SPEC. MANUAL W1-0582	CHARTED		FINISH:	
MIN. DRAFT	INTERPRET DIMENSIONS PER		PART NO.	
MIN. RADII	ASME Y14.5M-1994		NA	
FLATNESS	THIRD ANGLE PROJECTION		DRAWING NO.	
THICKNESS	DIMENSIONS ARE IN MILLIMETERS		KSA001	
VOLUME	DO NOT SCALE		SCALE: 0,500	
			SHEET: 1 OF 1	

PROPRIETARY NOTICE:
 THIS DOCUMENT CONTAINS CONFIDENTIAL AND PROPRIETARY INFORMATION OF HIGH END SYSTEMS INC., (ALSO DBA LIGHTWAVE RESEARCH) AND IS GIVEN TO THE RECEIVER IN CONFIDENCE. THE RECEIVER ACCEPTS AND AGREES THAT, EXCEPT AS AUTHORIZED BY HIGH END SYSTEMS, THE RECEIVER WILL NOT PERMIT THE USE OF THE DOCUMENT OR ANY COPY THEREOF OR THE INFORMATION THEREIN, WILL NOT COPY OR PERMIT COPYING THE DOCUMENT WILL NOT DISCLOSE TO OTHERS EITHER THE DOCUMENT OR THE INFORMATION THEREIN, AND WILL UPON COMPLETION OF THE NEEDS TO RETAIN THE DOCUMENT, OR UPON DEMAND, RETURN THE DOCUMENT WITHOUT RETAINING ANY OF THE INFORMATION CONTAINED THEREIN IN ANY FORM WHATSOEVER.

KSA002

REV.	DESCRIPTION	DATE	ENG	ECO #	APPR



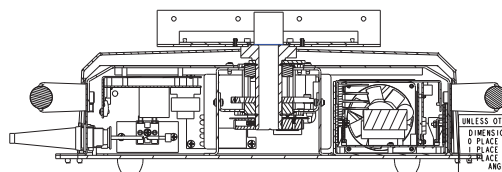
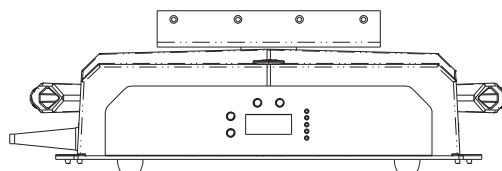
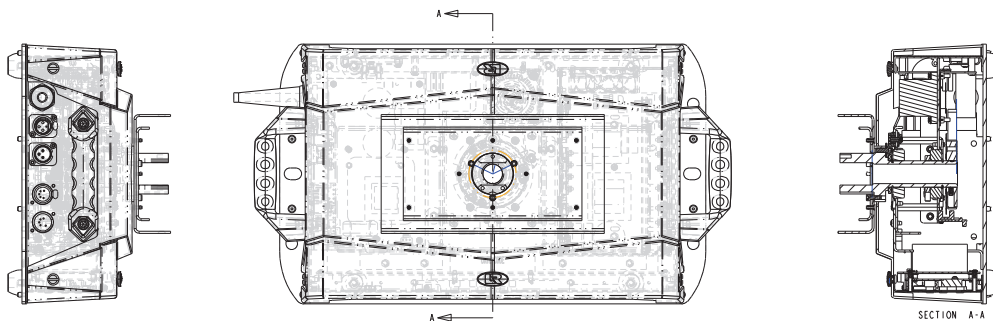
ITEM NO.	QTY.	FILENAME	PART NO.	REV	DESCRIPTION
17	4	WASHER318_500_040	90706101		WASHER, .040 X .318 ID X .500 OD
16	4	SCREW250SC_Q_OPEN	90712002	I	SCREW, CAPTIVE QUICK OPEN SLOTTED HD
15	4	SCREWS_16-24AC625N	90704008	I	SCREW .312-24 x .625 SOCKET CAP, ALLOY NICKEL
14	4	WASHER18X600RETNR_NY	90701098		RETAINER, WASHER NYLON BLACK
13	1	KSA024	NA	NA	PANEL, REAR, ELECTRONICS BOX, S-CMD
12	2	KS205	90720009	A	HANDLE, ELECTRONIC ENCLOSURE S-CMD
11	4	RUBBER_FT	90410089		FOOT, RUBBER STC/WH LONG
10	2	KS201	99080263	A	COVER, ELECTRONIC ENCLOSURE S-CMD
9	1	CONN_DHNF_M-HSNG	90404002		CONNECTOR, DHNF MALE HOUSING, BLK
8	1	CONN_DHNF_F-HSNG	90404001		CONNECTOR, DHNF BAG F HOUSING BLACK
7	1	TB318	80010081		BOARD, ASSY XLR CONNECTOR
6	1	KSA025	NA	I	BOARD, ASSY LOGIC S-CMD/SB TESTED
5	1	SYA025	-		BOARD ASM, 5-PIN XLR
4	1	SWA05B	80071435	B	BASEPLATE / SIDE PANEL, ASSY
3	1	KSA029	NA	2	ASSY, FAN STRUCTURE S-CMD
2	1	PSA002	80050069	A	ASSY, CHASSIS MOUNTED 700W LPS STUDIO BEAM
1	1	STC_STRAIN_RELIEF	cp	I	AC CABLE SUPPORT

UNLESS OTHERWISE SPECIFIED:	RELEASE DATE:	CEL:	 2105 GRACY FARMS LANE AUSTIN, TEXAS 78758 (512) 836-2244 FAX (512) 832-4128 http://www.highend.com	
DIMENSIONAL TOLERANCES:	ENG:	DA:		
0 PLACE DECIMAL = ±0.38	MEG:	DRW:		
1 PLACE DECIMAL = ±0.25	WEG:			
2 PLACE DECIMALS = ±0.13	ANGLES = ±0.5°			
FOR PAINTED PARTS REFER TO:	DESCRIPTION:			
ENG. SPEC. MANUAL W1-0582	ASSY, ELECTRONIC ENCLOSURE, S-CMD			
MIN. DRAFT	MATERIAL:		FINISH:	
W/IN. DRAG//	CHARTED			
FLATNESS	INTERPRET DIMENSIONS PER	PART NO.		DRAWING NO.
THICKNESS	ASME Y14.5M-1994	NA		KSA002
VOLUME	THIRD ANGLE PROJECTION		DO NOT SCALE	SCALE: 0.400
	DIMENSIONS ARE IN MILLIMETERS			SHEET: 1 OF 2

PROPRIETARY NOTICE:
 THIS DOCUMENT CONTAINS CONFIDENTIAL AND PROPRIETARY INFORMATION OF HIGH END SYSTEMS INC., (ALSO DBA LIGHTWAVE RESEARCH) AND IS GIVEN TO THE RECEIVER IN CONFIDENCE. THE RECEIVER ACCEPTS AND AGREES THAT, EXCEPT AS AUTHORIZED BY HIGH END SYSTEMS, THE RECEIVER WILL NOT PERMIT THE USE OF THIS DOCUMENT OR ANY COPY THEREOF OR THE INFORMATION THEREIN, WILL NOT COPY OR PERMIT COPYING THE DOCUMENT WILL NOT DISCLOSE TO OTHERS EITHER THE DOCUMENT OR THE INFORMATION THEREIN, AND WILL UPON COMPLETION OF THE NEEDS TO RETAIN THE DOCUMENT, OR UPON DEMAND, RETURN THE DOCUMENT WITHOUT RETAINING ANY OF THE INFORMATION CONTAINED THEREIN IN ANY FORM WHATSOEVER.

KSA002

REV.	DESCRIPTION	DATE	ENG	ECO #	APPR



SECTION B-B

PROPRIETARY NOTICE:

THIS DOCUMENT CONTAINS CONFIDENTIAL AND PROPRIETARY INFORMATION OF HIGH END SYSTEMS INC., (ALSO DBA LIGHTWAVE RESEARCH) AND IS GIVEN TO THE RECEIVER IN CONFIDENCE. THE RECEIVER ACCEPTS AND AGREES THAT, EXCEPT AS AUTHORIZED BY HIGH END SYSTEMS, THE RECEIVER WILL NOT PERMIT THE USE OF THE DOCUMENT OR ANY COPY THEREOF OR THE INFORMATION THEREIN, WILL NOT COPY OR PERMIT COPYING THE DOCUMENT WILL NOT DISCLOSE TO OTHERS EITHER THE DOCUMENT OR THE INFORMATION THEREIN, AND WILL UPON COMPLETION OF THE NEEDS TO RETAIN THE DOCUMENT, OR UPON DEMAND, RETURN THE DOCUMENT WITHOUT RETAINING ANY OF THE INFORMATION CONTAINED THEREIN IN ANY FORM WHATSOEVER.

UNLESS OTHERWISE SPECIFIED:

DIMENSIONAL TOLERANCES:

Ø PLACE DECIMAL: ±0.38

H PLACE DECIMAL: ±0.25

Ø PLACE DECIMALS: ±0.13

ANGLES: ±0.5°

FOR PAINTED PARTS REFER TO

ENG. SPEC. MANUAL W1-0582

MIN. DRAFT

WIR. DRA211

FLATNESS

THICKNESS

VOLUME

RELEASE DATE:

ENG:

MEG:

DRW:

DESCRIPTION:

ASST. ELECTRONIC ENCLOSURE, S-CMD

MATERIAL:

FINISH:

INTERPRET DIMENSIONS PER

ASME Y14.5M-1994

THIRD ANGLE PROJECTION

DIMENSIONS ARE IN MILLIMETERS

CE:

QA:

DRW:

High End

2105 GRACY FARMS LANE

AUSTIN, TEXAS 78758

(512) 836-2244

FAX (512) 832-4128

http://www.highend.com



DRAWING NO.

KSA002

REV.

2

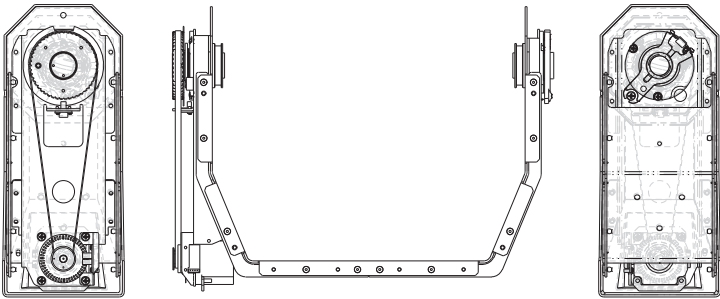
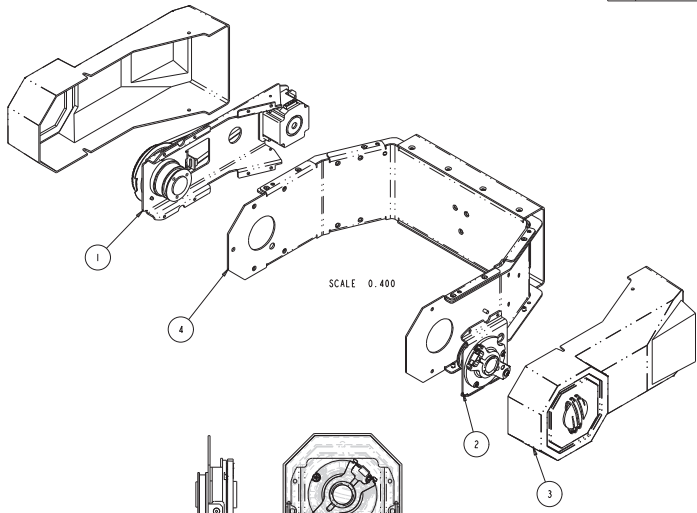
DO NOT SCALE

SCALE: 0,500

SHEET: 2 OF 2

KSA003

REV.	DESCRIPTION	DATE	ENG	ECO #	APPR
1	CREATE DRAWING	18MAR05	LR		



ITEM NO.	QTY.	FILENAME	PART NO.	REV	DESCRIPTION
4	1	KSA014	80071883	-	YOKE, ASSY RIVETED S-CMD
3	2	KSA202	39080264	A	COVER, YOKE S-CMD
2	1	KSA012	NA	1	BEARING, ASSY TILT DAMPER SIDE S-CMD
1	1	KSA013	NA	2	BEARING ASSY, TILT, GEAR SIDE, S-CMD

High End 2105 GRACY FARMS LANE
 AUSTIN, TEXAS 78758
 (512) 836-2240
 FAX (512) 832-4128
 http://www.highend.com



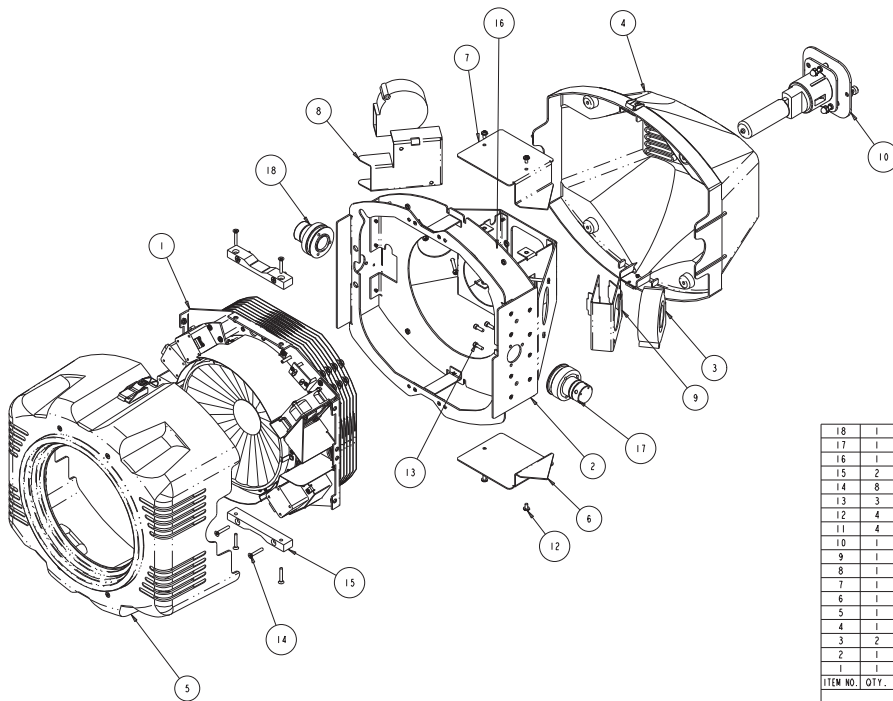
UNLESS OTHERWISE SPECIFIED	RELEASE DATE:	CEL:
DIMENSIONAL TOLERANCES:	ENG:	DA:
0 PLACE DECIMAL = ±0.38	ME:	
1 PLACE DECIMAL = ±0.25	MFG:	DRW:
2 PLACE DECIMALS = ±0.13	DESCRIPTION:	
ANGLES = ±0.5°	FOR PAINTED PARTS REFER TO	
	ENG. SPEC. MANUAL W1-0582	
	FINISH:	
	MIN. DRAFT	
	W/R. DR2(1)	
	TSD	
	FLATNESS	
	THICKNESS	
	VOLUME	

INTERPRET DIMENSIONS PER	SI	PART NO.
ASME Y14.5M-1994	METRIC	NA
THIRD ANGLE PROJECTION	A1	
DIMENSIONS ARE IN MILLIMETERS		

DRAWING NO.	REV.
KSA003	1

PROPRIETARY NOTICE:
 THIS DOCUMENT CONTAINS CONFIDENTIAL AND PROPRIETARY INFORMATION OF HIGH END SYSTEMS INC., (ALSO DBA LIGHTWAVE RESEARCH) AND IS GIVEN TO THE RECEIVER IN CONFIDENCE.
 THE RECEIVER ACCEPTS AND AGREES THAT, EXCEPT AS AUTHORIZED BY HIGH END SYSTEMS, THE RECEIVER WILL NOT PERMIT THE USE OF THE DOCUMENT OR ANY COPY THEREOF OR THE
 INFORMATION THEREIN, WILL NOT COPY OR PERMIT COPYING THE DOCUMENT WILL NOT DISCLOSE TO OTHERS EITHER THE DOCUMENT OR THE INFORMATION THEREIN, AND WILL UPON COMPLETION
 OF THE NEEDS TO RETAIN THE DOCUMENT, OR UPON DEMAND, RETURN THE DOCUMENT WITHOUT RETAINING ANY OF THE INFORMATION CONTAINED THEREIN IN ANY FORM WHATSOEVER.

KSA004



REV.	DESCRIPTION	DATE	ENG	ECO #	APPR

18	1	K5301	99140019	-	TUBE, TILT MOTOR BRAKE SIDE, S-CMD
17	1	K5302	99140020	-	TUBE, TILT GEAR SIDE, S-CMD
16	1	SWTCH_CHERRY_KWCOACF	90405308	-	SWITCH, 3 AMP 125V/250V
15	2	K5303	80071891	A	SUPPORT, FRAME ATTACH, CLR MOD S-CMD
14	8	SCREWM4P25SS	90709200	-	SCREW, M4 PHIL PAN 25.4 SS
13	3	SCREWB-32ACS50B3P	90707031	-	SCREW, 8-32 SOCKET CAP 1/2 B2 PATCH
12	4	SCREWB-32PPW313BZ	90709136	-	SCREW, 8-32 PHIL PAN 5/16 B2 W/STAR WSHR
11	4	SCREWB-32PP1500BZ	90709199	-	SCREW, 8-32 PHIL PAN 1.50 W/5 BZ
10	1	KSA027	N/A	2	LAMP ADJUST, ASSY S-CMD
9	1	K5119	80071886	-	DUCT, LAMP PLENUM, S-CMD
8	1	K5123	80071889	-	DUCT, COLOR MODULE S-CMD
7	1	K5121	80071887	-	COVER, LAMP PLENUM, TOP, S-CMD
6	1	K5122	80071888	A	COVER, LAMP PLENUM, BOTTOM, S-CMD
5	1	KSA019	NA	2	COVER ASSY, HEAD, FRONT S-CMD
4	1	KSA020	NA	2	COVER ASSY, HEAD S-CMD
3	2	K5705	80270030	-	BLOWER ASSY 24x 75mm
2	1	KSA015	80071885	A	ASSY, HEAD FRAME, RIVETED, S-CMD
1	1	KSA005	80570033	-	ASSY, COLOR MODULE S-CMD
ITEM NO.	QTY.	FILENAME	PART NO.	REV	DESCRIPTION
BILL OF MATERIALS					

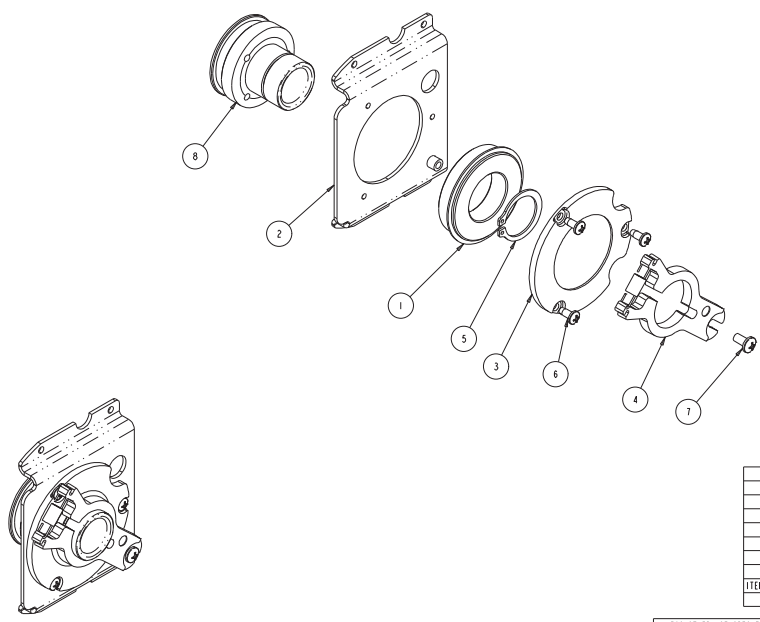
UNLESS OTHERWISE SPECIFIED:	RELEASE DATE:	CEL:	High End	2105 GRACY FARMS LANE AUSTIN, TEXAS 78758 (512) 836-2244 FAX (512) 832-4128 http://www.highend.com	
DIMENSIONAL TOLERANCES:	ENG:	DA:			
0 PLACE DECIMAL: ±0.38	MEG:				
1 PLACE DECIMAL: ±0.25	MEG:	DRW:			
2 PLACE DECIMALS: ±0.13	ANGLES: ±0.5°				
FOR PAINTED PARTS REFER TO:	DESCRIPTION:				
ENG SPEC MANUAL W1-0582	ASSY, HEAD, COMPLETE, S-CMD				
WLN, DRAFT	MATERIAL:				
WLN, DRAFT	CHARTED				
FLATNESS	INTERPRET DIMENSIONS PER	SI	PART NO.	DRAWING NO.	REV.
THICKNESS	ASME Y14.5M-1994	METRIC	NA	KSA004	I
VOLUME	THIRD ANGLE PROJECTION	A1	DO NOT SCALE	SCALE: 0.388	SHEET: 1 OF 1
	DIMENSIONS ARE IN MILLIMETERS				

PROPRIETARY NOTICE:

THIS DOCUMENT CONTAINS CONFIDENTIAL AND PROPRIETARY INFORMATION OF HIGH END SYSTEMS INC., (ALSO DBA LIGHTWAVE RESEARCH) AND IS GIVEN TO THE RECEIVER IN CONFIDENCE. THE RECEIVER ACCEPTS AND AGREES THAT, EXCEPT AS AUTHORIZED BY HIGH END SYSTEMS, THE RECEIVER WILL NOT PERMIT THE USE OF THE DOCUMENT OR ANY COPY THEREOF OR THE INFORMATION THEREIN, WILL NOT COPY OR PERMIT COPYING THE DOCUMENT WILL NOT DISCLOSE TO OTHERS EITHER THE DOCUMENT OR THE INFORMATION THEREIN, AND WILL UPON COMPLETION OF THE NEED TO RETAIN THE DOCUMENT, OR UPON DEMAND, RETURN THE DOCUMENT WITHOUT RETAINING ANY OF THE INFORMATION CONTAINED THEREIN IN ANY FORM WHATSOEVER.

KSAD12

REV.	DESCRIPTION	DATE	ENG	ECO #	APPR
1	CREATE DRAWING	18MAR05	LR		



ANCILLARY DRAWING

ITEM NO.	QTY.	FILENAME	PART NO.	REV	DESCRIPTION
8	1	KS301	99140019	-	TUBE, TILT MOTOR BRAKE SIDE, S-CMD
7	1	SCREW10-32PPD380BZ	90709020		SCREW, PHIL PAN 10-32 X 3/8 M/S Sbz
6	3	SCREW8-18PPB380BZ	90709043		SCREW, #8 PHIL PAN 3/8 B TYPE SS B/O
5	1	RING100DEXT	90701071	I	RETAINER, RING ZINC YELLOW (1.00 1D)
4	1	SP144	80140023	-	DAMPER, SHAFT TENSIONER
3	1	SP465	99260447	A	CAP BRG SUPRT 910PPG, DIECAST, MACHINED
2	1	SY154	99260184	A	BRACKET, TILT BEARING MTR BK SIDE S 250
1	1	9106PPG	90719007	I	BEARING, TECH 6006-2RSNR STC

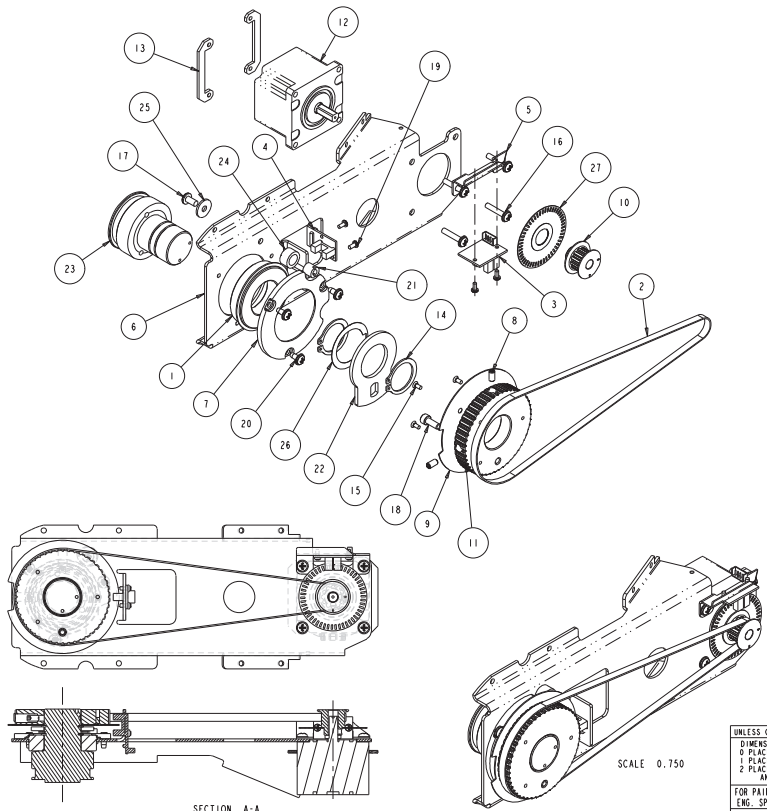
BILL OF MATERIALS

UNLESS OTHERWISE SPECIFIED:	RELEASE DATE:	CC:	 2105 GRACY FARMS LANE AUSTIN, TEXAS 78758 (512) 836-2244 FAX (512) 837-4128 http://www.highend.com	
DIMENSIONAL TOLERANCES:	ENG:	DA:		
0 PLACE DECIMAL = ±0.38	ME:	DRW: LARRY R		
1 PLACE DECIMAL = ±0.25	MG:			
2 PLACE DECIMALS = ±0.13	ANGLES = ±0.5°			
FOR PAINTED PARTS REFER TO ENG. SPEC. MANUAL W1-0592	DESCRIPTION:	MATERIAL:	FINISH:	
MIN. DRAFT	BEARING, ASSY TILT DAMPER SIDE S-CMD	CHARTEED	NA	
MIN. RADII				
FLATNESS	INTERPRET DIMENSIONS PER ASME Y14.5M-1994			
THICKNESS	THIRD ANGLE PROJECTION			
VOLUME	DIMENSIONS ARE IN MILLIMETERS			

PROPRIETARY NOTICE:
 THIS DOCUMENT CONTAINS CONFIDENTIAL AND PROPRIETARY INFORMATION OF HIGH END SYSTEMS INC., (ALSO DBA LIGHTWAVE RESEARCH) AND IS GIVEN TO THE RECEIVER IN CONFIDENCE. THE RECEIVER ACCEPTS AND AGREES THAT, EXCEPT AS AUTHORIZED BY HIGH END SYSTEMS, THE RECEIVER WILL NOT PERMIT THE USE OF THIS DOCUMENT OR ANY COPY THEREOF OR THE INFORMATION THEREIN, WILL NOT COPY OR PERMIT COPYING THE DOCUMENT WILL NOT DISCLOSE TO OTHERS EITHER THE DOCUMENT OR THE INFORMATION CONTAINED THEREIN, AND WILL UPON COMPLETION OF THE NEEDS TO RETAIN THE DOCUMENT, OR UPON DEMAND, RETURN THE DOCUMENT WITHOUT RETAINING ANY OF THE INFORMATION CONTAINED THEREIN IN ANY FORM WHATSOEVER.

PART NO. NA
 DRAWING NO. KSAD12
 REV. 1
 DO NOT SCALE SCALE: 1:1000 SHEET: 1 OF 1

KS4013



REV.	DESCRIPTION	DATE	ENG	ECO #	APPR
1	CREATE DRAWING	18MAR05	LR		
2	UPDATE HARDWARE, DESCRIPTIONS PER MANUFACTURING	23SEP05	LR		

ANCILLARY DRAWING

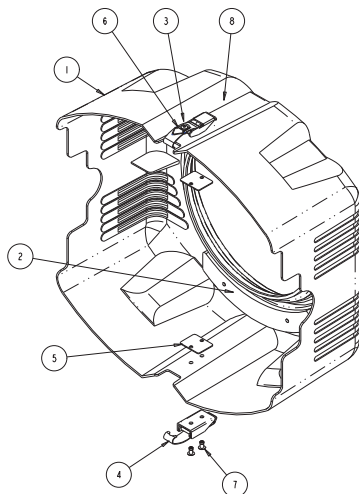
27	1	CS505	99180029	-	WHEEL, OPTICAL ENCODER, LEXAN 50 SLOTS
26	1	WP207	90706058	C	WASHER, SPRING STAINLESS STC
25	1	WASHER10FLT203X625SS	90706056	I	WASHER, FLAT #10 .203X.625X.056-071 SS
24	1	SY416	90717022	I	TUBING, 3/8 SAE 30R7 FUEL/EMIS
23	1	KS302	99140020	-	TUBE, TILT GEAR SIDE, S-CMD
22	1	SY115	99260192	A	STOP, TILT, SP2 ST2
21	1	SY310	90702120	A	STANDOFF - .375 OD, 10-32 THD SLOTTED
20	3	SCREW8-18PPW380B	90709142	-	SCREW, 8B PHIL PAN 3/8 B W/STAR WASHER
19	4	SCREW4-20PF250S2	90709129	-	SCREW, 4A PHIL PAN 1/4 S2
18	1	SCREW10-32AC300B2	90707033	-	SCREW, 10-32 SOCKET CAP 1/2 BZ PATCH
17	1	SCREW10-32PP380SS	90709148	-	SCREW, 10-32 PHIL PAN 7/8 SS
16	4	SCREW8-32PPW875	90709172	-	SCREW, 8-32 PHIL PAN 7/8 MS CS C2 SWE
15	3	SCREW4-40PFU250P	90711044	I	SCREW, 4-40 PHIL FLAT UC 1/4 PATCH
14	2	RING1000EXT	90710171	I	RETAINER, RING ZINC YELLOW (1.00 ID)
13	2	SW058	99080117	-	PLATE, NUT TILT MOTOR
12	1	M0056	90270028	-	MOTOR, STEP 3PH 556 19MM SHAFT JS
11	1	SY336	99430044	D	GEAR, PULLEY 48 TOOTH W/HOLE MACHINED EXT
10	1	SP253	99430017	A	GEAR, PINION PAN/TILT STUDIO SPOT
9	1	SY158	99360016	A	FLANGE, PULLEY, PAN/TILT
8	2	SCREW10-32AS380	90710083	-	CUP, SETSCREW PT 10-32 X 3/8 ALLOY
7	1	SP465	99260447	A	CAP BRG SUPRT 910PPG, DIECAST, MACHINED
6	1	KS112	99260478	-	BRACKET, TILT BEARING GEAR SIDE, S-CMD
5	1	SY157	99260225	A	BRACKET, ENCODER SENSOR, SP2 ST2
4	1	TD090	80040019	I	BOARD, SENSOR ASSY, TECHNOBEAM
3	1	SY415	80010103	I	BOARD, DUAL SENSOR 2 ASSY
2	1	BELT .25W .117TOOTH	99360046	I	BELT, TIMING BELT .2P 1/4"X .117 TOOTH
1	1	9106PPG	90719007	I	BEARING, TECH 6006-2RSNR STC
ITEM NO.	QTY.	FILENAME	PART NO.	REV	DESCRIPTION
BILL OF MATERIALS					

UNLESS OTHERWISE SPECIFIED:	RELEASE DATE:	CE:	High End	2105 GRACY FARMS LANE AUSTIN, TEXAS 78758 (512) 836-2244 FAX (512) 832-4128 http://www.highend.com	
DIMENSIONAL TOLERANCES: 0 PLACE DECIMAL = ±0.38 1 PLACE DECIMAL = ±0.25 2 PLACE DECIMALS = ±0.13 ANGLES = ±.5°	ENG:	DA:	DRW:	I ROESSLER	
FOR PAINTED PARTS REFER TO ENG. SPEC. MANUAL W1-0582	MATERIAL:	FINISH:		NA	
MIN. DRAFT	INTERPRET DIMENSIONS PER ASME Y14.5M-1994 THIRD ANGLE PROJECTION DIMENSIONS ARE IN MILLIMETERS	SI	METRIC	PART NO. NA	DRAWING NO. KS4013
VOLUME	DO NOT SCALE	SCALE: 0.750	SHEET: 1 OF 1	REV. 2	

PROPRIETARY NOTICE:
THIS DOCUMENT CONTAINS CONFIDENTIAL AND PROPRIETARY INFORMATION OF HIGH END SYSTEMS INC., (ALSO DBA LIGHTWAVE RESEARCH) AND IS GIVEN TO THE RECEIVER IN CONFIDENCE. THE RECEIVER ACCEPTS AND AGREES THAT, EXCEPT AS AUTHORIZED BY HIGH END SYSTEMS, THE RECEIVER WILL NOT PERMIT THE USE OF THIS DOCUMENT OR ANY COPY THEREOF OR THE INFORMATION THEREIN, WILL NOT COPY OR PERMIT COPYING THE DOCUMENT WILL NOT DISCLOSE TO OTHERS EITHER THE DOCUMENT OR THE INFORMATION THEREIN, AND WILL UPON COMPLETION OF THE NEEDS TO RETAIN THE DOCUMENT, OR UPON DEMAND, RETURN THE DOCUMENT WITHOUT RETAINING ANY OF THE INFORMATION CONTAINED THEREIN IN ANY FORM WHATSOEVER.

KSA019

REV.	DESCRIPTION	DATE	ENG	ECO #	APPR
1	CREATE DRAWING	29MAR05	MB		
2	ADD SAFETY TEATHER, CHANGED LATCH PN I PL	4AUG05	M BELL		



NOTES:

- PARTS TO BE FIRMLY SEATED PRIOR TO RIVETING OPERATION

ANCILLARY DRAWING

8	4	SCREWB-32PFU	80S09141	-	SCREW, 8-32 PHIL FLAT UC 3/8 BZ PATCH
7	5	RIVETS4A0B	90701028	-	RIVET, 5/32" .126-.187 DOMED OPEN, BLACK
6	1	SP179	90701013	I	RING, D EM, IB, TS, AF
5	2	KS128	99800270	-	PLATE, BEZEL, BACKUP, S-CMD
4	1	LATCH-OCL	90410074	A	LATCH, DRAW BLACK TC
3	1	WP171	85000046	B	LATCH, W/ HOLE STC
2	2	KS129	80071890	-	COUNTERWEIGHT, HEAD, S-CMD
1	1	KS204	99350005	A	BEZEL, FRONT HEAD S-CMD
ITEM NO.	QTY.	FILENAME	PART NO.	REV	DESCRIPTION

BILL OF MATERIALS

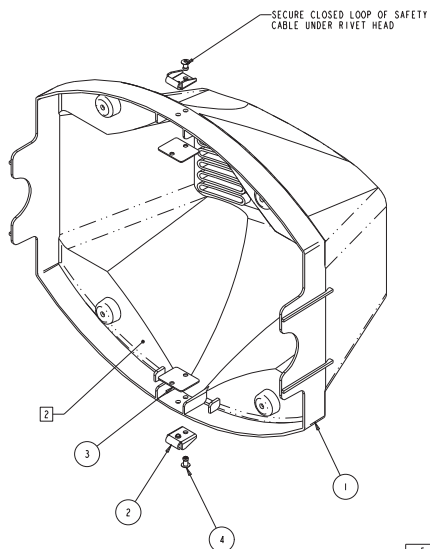
UNLESS OTHERWISE SPECIFIED:	RELEASE DATE:	CEL:	High End	2105 GRACY FARMS LANE AUSTIN, TEXAS 78758 (512) 836-2244 FAX (512) 837-4128 http://www.highend.com	
DIMENSIONAL TOLERANCES:	ENG:	DA:	MEG:	DRW: LARRY R	
0 PLACE DECIMAL: ±0.38	ME:				
1 PLACE DECIMAL: ±0.25	MEG:				
2 PLACE DECIMALS: ±0.13	MEG:				
ANGLES: ±0.5°	DESCRIPTION:				
FOR PAINTED PARTS REFER TO	COVER ASSY, HEAD, FRONT S-CMD				
ENG. SPEC. MANUAL W-0582	MATERIAL:				
MIN. DRAFT	FINISH:				
MIN. RADII	NA				
FLATNESS	INTERPRET DIMENSIONS PER				
THICKNESS	ASME Y14.5M-1994				
VOLUME	THIRD ANGLE PROJECTION				
	DIMENSIONS ARE IN MILLIMETERS				
	DO NOT SCALE				
	SCALE: 0,500				
	SHEET: 1 OF 1				

PROPRIETARY NOTICE:

THIS DOCUMENT CONTAINS CONFIDENTIAL AND PROPRIETARY INFORMATION OF HIGH END SYSTEMS INC., (ALSO DBA LIGHTWAVE RESEARCH) AND IS GIVEN TO THE RECEIVER IN CONFIDENCE. THE RECEIVER ACCEPTS AND AGREES THAT, EXCEPT AS AUTHORIZED BY HIGH END SYSTEMS, THE RECEIVER WILL NOT PERMIT THE USE OF THIS DOCUMENT OR ANY COPY THEREOF OR THE INFORMATION THEREIN, WILL NOT COPY OR PERMIT COPYING THE DOCUMENT WILL NOT DISCLOSE TO OTHERS EITHER THE DOCUMENT OR THE INFORMATION THEREIN, AND WILL UPON COMPLETION OF THE NEEDS TO RETAIN THE DOCUMENT, OR UPON DEMAND, RETURN THE DOCUMENT WITHOUT RETAINING ANY OF THE INFORMATION CONTAINED THEREIN IN ANY FORM WHATSOEVER.

KSA020

REV.	DESCRIPTION	DATE	ENG	ECO #	APPR
1	CREATE DRAWING	25MAR05	LR		
2	ADD SAFETY CABLE	20SEP05	MCB		



NOTES:

- PARTS TO BE FIRMLY SEATED PRIOR TO RIVETING OPERATION.
- VENDOR TO MARK PART WITH PART NUMBER, REVISION, DATE CODE (WWYY OR YYMMDD), AND MANUFACTURER NAME OR LOGO

ANCILLARY DRAWING

ITEM NO.	QTY.	FILENAME	PART NO.	REV	DESCRIPTION
5	1	90409024			SAFETY CABLE W/CLIP
4	2	RIVETS4A0B	90701028		RIVET, 5/32" - 126-187 DOWEL OPEN, BLACK
3	2	RS128	99080270		PLATE, BEZEL, BACKUP, S-CMD
2	2	KEEPER_OC_LATCH	90701291		LATCH, KEEPER HOOK WITH DIMPLE BEZEL S250 SB
1	1	KS203	99350084	C	BEZEL, REAR HEAD S-CMD

BILL OF MATERIALS

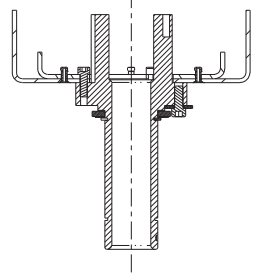
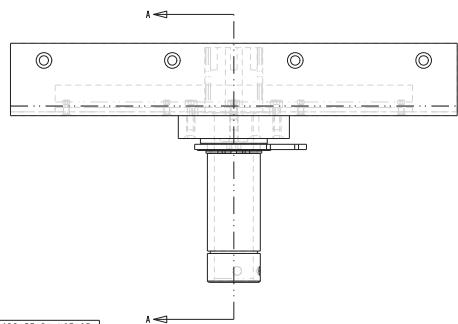
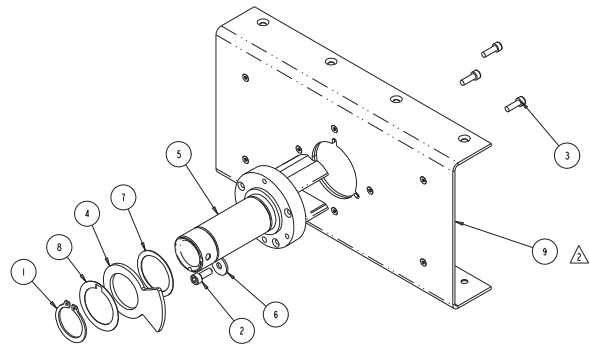
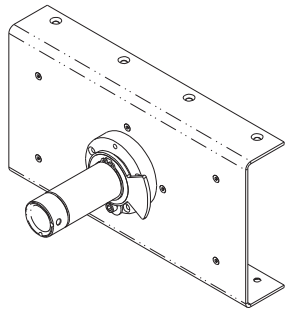
UNLESS OTHERWISE SPECIFIED:	RELEASE DATE:	CE:	High End	2105 GRACY FARMS LANE AUSTIN, TEXAS 78758 (512) 836-2244 FAX (512) 832-4128 http://www.highend.com	
DIMENSIONAL TOLERANCES:	ENG:	DA:			
0 PLACE DECIMAL = ±0.38	ME:				
1 PLACE DECIMAL = ±0.13	WEG:	DRW: LARRY R			
2 PLACE DECIMALS = ±0.13	ANGLES = ±0.5°				
DESCRIPTION:	FOR PAINTED PARTS REFER TO	COVER ASSY, HEAD S-CMD			
ENG. SPEC. MANUAL W1-0582	MATERIAL:	CHARTED	FINISH:	NA	
MIN. DRAFT					
WIR. DIA(1)	INTERPRET DIMENSIONS PER	ASME Y14.5M-1994	PART NO.	NA	DRAWING NO.
FLATNESS	THIRD ANGLE PROJECTION				KSA020
THICKNESS	DIMENSIONS ARE IN MILLIMETERS		DO NOT SCALE	SCALE: 0,63x	SHEET: 1 OF 1
VOLUME					REV.
					2

PROPRIETARY NOTICE:

THIS DOCUMENT CONTAINS CONFIDENTIAL AND PROPRIETARY INFORMATION OF HIGH END SYSTEMS INC., (ALSO DBA LIGHTWAVE RESEARCH) AND IS GIVEN TO THE RECEIVER IN CONFIDENCE. THE RECEIVER ACCEPTS AND AGREES THAT, EXCEPT AS AUTHORIZED BY HIGH END SYSTEMS, THE RECEIVER WILL NOT PERMIT THE USE OF THE DOCUMENT OR ANY COPY THEREOF OR THE INFORMATION THEREIN, WILL NOT COPY OR PERMIT COPYING THE DOCUMENT WILL NOT DISCLOSE TO OTHERS EITHER THE DOCUMENT OR THE INFORMATION THEREIN, AND WILL UPON COMPLETION OF THE NEED TO RETAIN THE DOCUMENT, OR UPON DEMAND, RETURN THE DOCUMENT WITHOUT RETAINING ANY OF THE INFORMATION CONTAINED THEREIN IN ANY FORM WHATSOEVER.

KSA022

REV.	DESCRIPTION	DATE	ENG	ECN #	APPR
1	CREATE DRAWING	03MAY05	M BELL		
2	WAS: KS109 YOKE SUPRT, NOW KSA028 ASSY	22SEP05	LR		



SECTION A-A

ANCILLARY DRAWING

ITEM NO.	QTY.	FILENAME	PART NO.	DESCRIPTION
9	1	KSA028	80070401	YOKE, ASSY SUPPORT, RIVETED, S-CMD
8	1	WP207	90706058	WASHER, SPRING STAINLESS STC
7	1	WASHER_NYLON	90706090	WASHER, NYLON 1.188 ID X 1.50 OD X .020 THK
6	1	WASHER203.625.06THK	90706056	WASHER, .6250D, .2031D, .06 THK
5	1	SW330	99140013	TUBE, PAN STUDIO BEAM PC
4	1	ST112	99260193	STOP, PAN, SP2 ST2
3	3	SCREWS-32AC500B2P	90707031	SCREW, 8-32 SOCKET CAP 1/2 BZ PATCH
2	1	SCREW10-32AC500BZ	90707033	SCREW, 10-32 SOCKET CAP 1/2 BZ PATCH
1	1	RING1000EXT	90701071	RETAINER, RING ZINC YELLOW (1.00 ID)

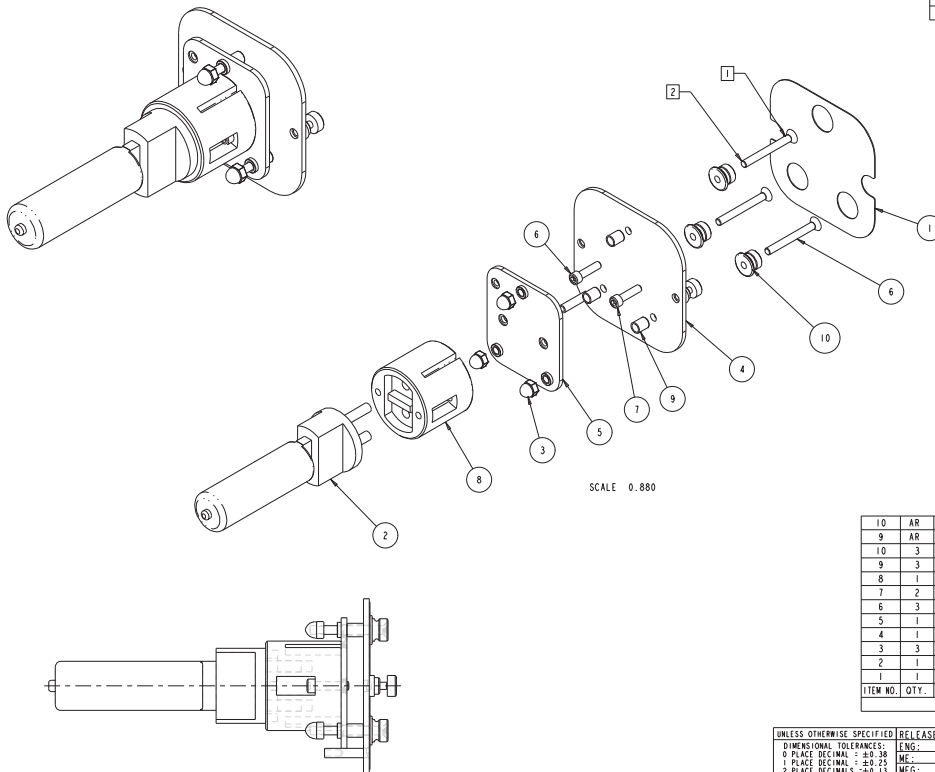
BILL OF MATERIALS

UNLESS OTHERWISE SPECIFIED:	RELEASE DATE:	CC:	High End	2105 GRACY FARMS LANE AUSTIN, TEXAS 78758 (512) 836-2244 FAX (512) 832-4128 http://www.highend.com	
DIMENSIONAL TOLERANCES:	ENG:	DA:	DRW: M BELL		
0 PLACE DECIMAL = ±0.38	MEG:				
1 PLACE DECIMAL = ±0.25	MEG:				
2 PLACE DECIMALS = ±0.13	MEG:				
ANGLES = ±0.5°	DESCRIPTION:				
FOR PAINTED PARTS REFER TO:	PAN TUBE ASSY, S-CMD				
ENG. SPEC. MANUAL W1-0582	MATERIAL:				
MIN. DRAFT	CHARTED				
MIN. RADII	INTERPRET DIMENSIONS PER	SI	PART NO.	FINISH:	
FLATNESS	ASME Y14.5M-1994	METRIC	NA	NA	
THICKNESS	THIRD ANGLE PROJECTION	A1			
VOLUME	DIMENSIONS ARE IN MILLIMETERS		DO NOT SCALE	SCALE: 0.75x	

PROPRIETARY NOTICE:
 THIS DOCUMENT CONTAINS CONFIDENTIAL AND PROPRIETARY INFORMATION OF HIGH END SYSTEMS INC., (ALSO DBA LIGHTWAVE RESEARCH) AND IS GIVEN TO THE RECEIVER IN CONFIDENCE.
 THE RECEIVER ACCEPTS AND AGREES THAT, EXCEPT AS AUTHORIZED BY HIGH END SYSTEMS, THE RECEIVER WILL NOT PERMIT THE USE OF THIS DOCUMENT OR ANY COPY THEREOF OR THE
 INFORMATION THEREIN, WILL NOT COPY OR PERMIT COPYING THE DOCUMENT WILL NOT DISCLOSE TO OTHERS EITHER THE DOCUMENT OR THE INFORMATION THEREIN, AND WILL UPON COMPLETION
 OF THE NEEDS TO RETAIN THE DOCUMENT, OR UPON DEMAND, RETURN (OR DOCUMENT DESTROY) RETAINING ANY OF THE INFORMATION CONTAINED THEREIN IN ANY FORM WHATSOEVER.

DRAWING NO. **KSA022** REV. **2**
 SHEET: 1 OF 1

KS4027



SCALE 0.880

REV.	DESCRIPTION	DATE	ENG	ECO #	APPR
1	CREATE DRAWING	27JUN05	M BELL		
2	ADD PN 90707083	29JUL05	M BELL		

NOTES:

- 1 APPLY LOCTITE PRIMER AND THREADLOCKER TO THE THREADS AT THE BASE OF THE SCREW HEAD ONLY. NO THREADLOCKER ON ANY THREADS THAT ENGAGE LAMP ADJUST PLATE.
- 2 APPLY LOCTITE PRIMER AND THREADLOCKER TO ACORN NUT AND SCREW ENGAGEMENT THREADS ONLY. NO LOCTITE ALLOWED ON SCREW THREADS BELOW ACORN NUT.

ITEM NO.	QTY.	FILENAME	PART NO.	REV	DESCRIPTION
10	AR	NA	99250032	-	LOCTITE 7649, PRIMER
9	AR	NA	99250033	-	LOCTITE THREADLOCKER, 266, HI-TEMP
10	3	KS304	80071892	-	THUMBSCREW, LAMP ADJUST, KNURLED
9	3	SPRING_COMPRESSION	90701210	-	SPRING, COMPRESSION, .30 OD x 1.0 L SS
8	1	SOCKET_G22_LAMP	99150023	-	SOCKET, LAMP G22, 20 AMP 350C
7	2	SCREW10-32AC10005	90701083	-	SCREW, SOCKET CAP 10-32 x 1.1W, SS MS
6	3	SCREW10-32PF175SS	90711056	-	SCREW, PHIL FLAT HEAD SS 10-32 x 1.75
5	1	KS124	99080269	-	PLATE, LAMP ADJUST, S-CMD
4	1	KS125	80071884	-	PANEL, LAMP ACCESS, S-CMD
3	3	NUT10-32ACORN	90703016	-	NUT, ACORN NUT 10-32 LOW CROWN SZ
2	1	LAMP_MSR700_RED	55030069	-	LAMP, MSR 700 HID, 5600K CT
1	1	KS453	99310423	-	LABEL, LAMP ADJUST CAP, S-CMD

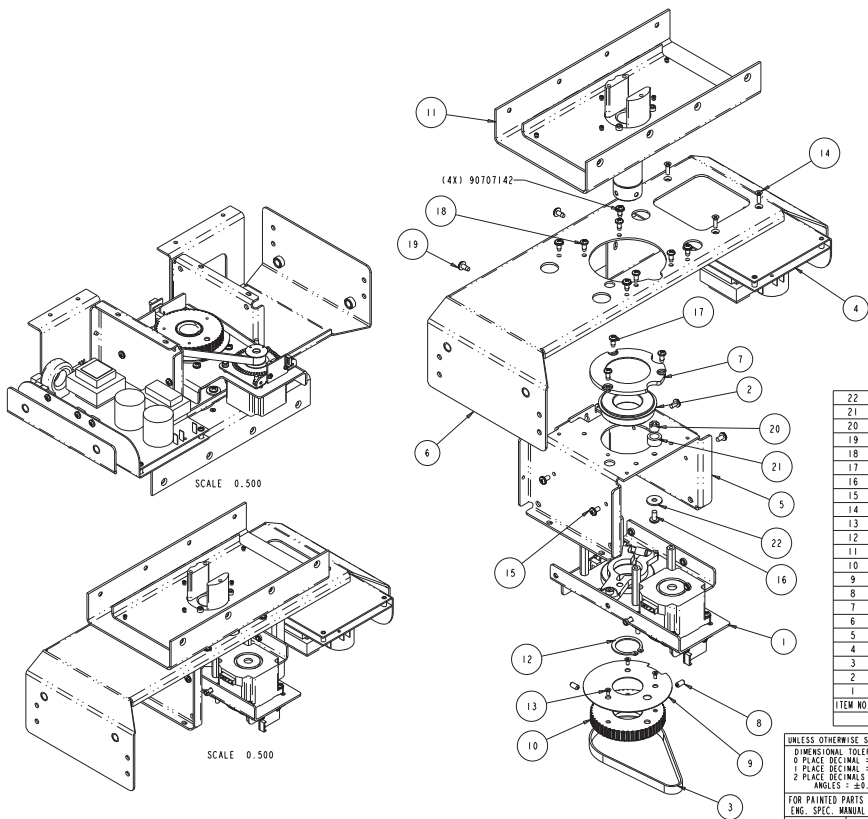
BILL OF MATERIALS

UNLESS OTHERWISE SPECIFIED:	RELEASE DATE:	CC:	High End	2105 GRACY FARMS LANE AUSTIN, TEXAS 78758 (512) 836-2244 FAX (512) 832-4128 http://www.highend.com	
DIMENSIONAL TOLERANCES:	ENG:	DA:			
0 PLACE DECIMAL = ±0.38	MEG:	DRW:	M BELL		
1 PLACE DECIMAL = ±0.25	ENG:				
2 PLACE DECIMALS = ±0.13	ANGLES = ±0.5°				
FOR PAINTED PARTS REFER TO ENG SPEC MANUAL W1-0592	DESCRIPTION:	LAMP ADJUST, ASSY S-CMD			
MIN. DRAFT	MATERIAL:	CHARTED	FINISH:	NA	
MIN. RADII	INTERPRET DIMENSIONS PER	ASME Y14.5M-1994	PART NO.	N/A	
FLATNESS	THIRD ANGLE PROJECTION		DRAWING NO.	KS4027	
THICKNESS	DIMENSIONS ARE IN MILLIMETERS		REV.	2	
VOLUME	DO NOT SCALE	SCALE: 1:600	SHEET: 1 OF 1		

PROPRIETARY NOTICE:
THIS DOCUMENT CONTAINS CONFIDENTIAL AND PROPRIETARY INFORMATION OF HIGH END SYSTEMS INC., (ALSO DBA LIGHTWAVE RESEARCH) AND IS GIVEN TO THE RECEIVER IN CONFIDENCE. THE RECEIVER ACCEPTS AND AGREES THAT, EXCEPT AS AUTHORIZED BY HIGH END SYSTEMS, THE RECEIVER WILL NOT PERMIT THE USE OF THIS DOCUMENT OR ANY COPY THEREOF OR THE INFORMATION THEREIN, WILL NOT COPY OR PERMIT COPYING THE DOCUMENT WILL NOT DISCLOSE TO OTHERS EITHER THE DOCUMENT OR THE INFORMATION THEREIN, AND WILL UPON COMPLETION OF THE NEEDS TO RETAIN THE DOCUMENT, OR UPON DEMAND, RETURN THE DOCUMENT WITHOUT RETAINING ANY OF THE INFORMATION CONTAINED THEREIN IN ANY FORM WHATSOEVER.

KS4029

REV.	DESCRIPTION	DATE	ENG	ECO #	APPR
1	CREATE DRAWING				
2	ADD/CORRECT HARDWARE & COMPONENTS	22SEP05	LR		



ANCILLARY DRAWING

ITEM NO.	QTY.	FILENAME	PART NO.	REV.	DESCRIPTION
22	1	WASHER10FLT203X625SS	90706056	1	WASHER, FLAT #10 .203X.625X.056-071 SS
21	1	SY416	90717022	1	TUBING, 3/8 SAE 30R7 FUEL/EMIS
20	1	SW333	90702154	-	STANDOFF .375 OD, 10-32 THD SLOTTED
19	6	SCREWB-18PPW300D	90709142	-	SCREW, #8 PHIL PAN 3/8 B W/STAR WASHR
18	4	SCREWB-18PPB300DZ	90709043	-	SCREW, #8 PHIL PAN 3/8 B TYPE SS B/O
17	3	SCREWB-18PPB300DZ	90709128	-	SCREW, #8 PHIL PAN 3/8 B TYPE BZ
16	1	SCREW10-32PP300SS	90709148	-	SCREW, 10-32 PHIL PAN 3/8 SS
15	4	SCREWB-32PPW313BZ	90709136	-	SCREW, 8-32 PHIL PAN 5/16 BZ W/STAR WSHR
14	3	SCREW6-32PF0500S2	90711047	-	SCREW, 6-32 PHIL FLAT 1/2 SZ
13	3	SCREW4-40PFU250P	90711044	1	SCREW, 4-40 PHIL FLAT UC 1/4 PATCH
12	1	RING1000EXT	90701071	1	RETAINER, RING 2"X YELLOW (1.00 ID)
11	1	KS4022	NA	2	PAN TUBE ASSY, S-CMD
10	1	SY336	99430044	D	GEAR, PULLEY 4B TOOTH W/HOLE MACHINED EXT
9	1	SY158	99360016	A	FLANGE, PULLEY, PAN/TILT
8	2	SCREW0-32AS380	90701083	-	CUP, SETSCREW PT 10-32 X 3/8 ALLOY
7	1	SP465	99260447	A	CAP BRG SUPRT 910PPG, DIECAST, MACHINED
6	1	SW150	99260286	C	BRACKET, PAN SUPPORT
5	1	SW155	99260285	D	BRACKET, PAN BEARING MOUNT STUDIO BEAM
4	1	SWA136	80050049	-	BOARD, ASSY MOTOR POWER SUPPLY SB TESTED
3	1	BELT2P-375W-68TOOTH	99360006	-	BELT, TIMING .2P 3/8"W .67 TOOTH STC
2	1	9106PPG	90719007	1	BEARING, TECH 6006-2R2NR STC
1	1	SWA176	NA	3	ASSY, LOWER BEARING, STUDIO BEAM

UNLESS OTHERWISE SPECIFIED: RELEASE DATE: CC: High End 2105 GRACY FARMS LANE AUSTIN, TEXAS 78758 (512) 836-2244 FAX (512) 832-4128 http://www.highend.com

0 PLACE DECIMAL = ±0.38
1 PLACE DECIMAL = ±0.25
2 PLACE DECIMALS = ±0.13
ANGLES = ±.5°

FOR PAINTED PARTS REFER TO: ENG. SPEC. MANUAL W1-0582

DESCRIPTION: ASSY, PAN STRUCTURE S-CMD

FINISH: NA

MIN. DRAFT: CHARTED

W.K. DRA211

INTERPRET DIMENSIONS PER ASME Y14.5M-1994 THIRD ANGLE PROJECTION DIMENSIONS ARE IN MILLIMETERS

SI METRIC A1

PART NO. NA

DRAWING NO. KS4029

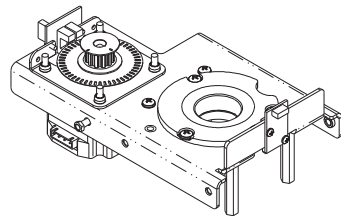
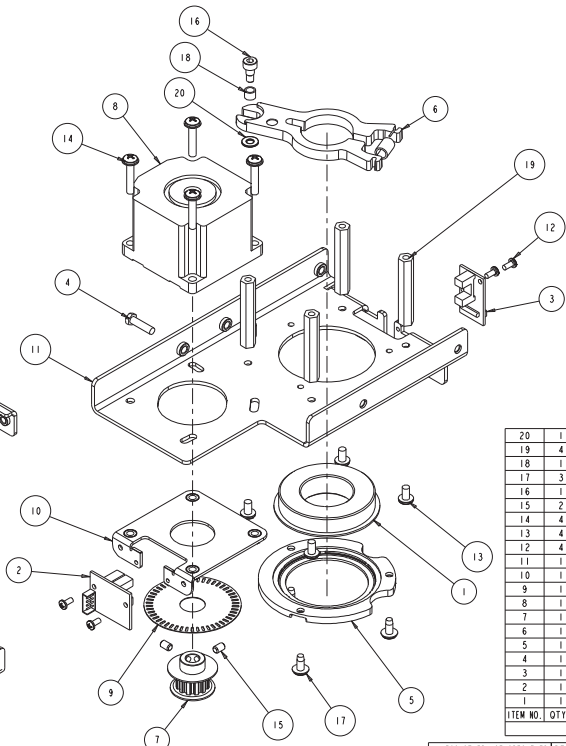
DO NOT SCALE SCALE: 0.500

VOLUME: SHEET: 1 OF 1

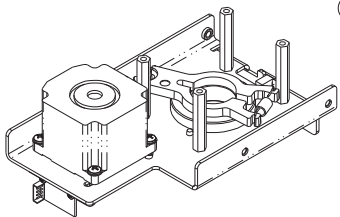
PROPRIETARY NOTICE:
THIS DOCUMENT CONTAINS CONFIDENTIAL AND PROPRIETARY INFORMATION OF HIGH END SYSTEMS INC., (ALSO DBA LIGHTWAVE RESEARCH) AND IS GIVEN TO THE RECEIVER IN CONFIDENCE. THE RECEIVER ACCEPTS AND AGREES THAT, EXCEPT AS AUTHORIZED BY HIGH END SYSTEMS, THE RECEIVER WILL NOT PERMIT THE USE OF THIS DOCUMENT OR ANY COPY THEREOF OR THE INFORMATION THEREIN, WILL NOT COPY OR PERMIT COPYING THE DOCUMENT WILL NOT DISCLOSE TO OTHERS EITHER THE DOCUMENT OR THE INFORMATION THEREIN, AND WILL UPON COMPLETION OF THE NEED TO RETAIN THE DOCUMENT, OR UPON DEMAND, RETURN THE DOCUMENT WITHOUT RETAINING ANY OF THE INFORMATION CONTAINED THEREIN IN ANY FORM WHATSOEVER.

SWA176

REV.	DESCRIPTION	DATE	ENG	ECO	APPR
1	CREATE DRAWING				
2	ITEM 6 WAS PN SP382	3JUN05	M BELL		
3	UPDATE HARDWARE PER MANUFACTURING	22SEP05	LR		



SCALE 0.880



SCALE 0.880

ANCILLARY DRAWING

ITEM NO.	QTY.	FILENAME	PART NO.	REV	DESCRIPTION
20	1	WASHERB-32S	90706009		WASHER, #8 FLAT SS .174 X .375 X .032
19	4	ST334	90702132		STANDOFF, PAN BEARING SUPPORT, S 250
18	1	SPACEB250ND188	90702135		SPACER, .188 X 3/16 ID, 1/4 OD
17	3	SCREWB-18PPW380B	90709142		SCREW, #8 PHIL PAN 3/8 B W/STAR WASHER
16	1	SCREWB-32AC18TX187BZ	90708014		SCREW, 8-32 SOCKET SHOULDER 3/16 X 3/16
15	2	SCREWB-32AS250F8Z	90707091		SCREW, 8-32 SOCKET SET 1/4 BZ FLAT PT
14	4	SCREWB-32PPW87S	90709172		SCREW, 8-32 PHIL PAN 7/8 MS CS CZ SWE
13	4	SCREWB-32PPW313BZ	90709136		SCREW, 8-32 PHIL PAN 5/16 BZ W/STAR WSHR
12	4	SCREW4-20PP250S2	90709129		SCREW, #4 PHIL PAN 1/4 SZ
11	1	SW156	99260284	A	PLATE, LOWER BEARING HOLDER
10	1	SW060	99080114	B	PLATE, ENCODER STUDIO BEAM
9	1	WP240	85000043	A	OPTICAL ENCODER WHEEL, LEXAN, 50 SLOTS
8	1	MR056	90270028	-	MOTOR, STEP 3PH S56 19MM SHAFT JS
7	1	SP253	99430017	A	GEAR, PINION PAN/TILT STUDIO SPOT
6	1	SYA071	80140028	A	DAMPER, SHAFT TENSIONER ASSY, ACETAL
5	1	SP465	99260447	A	CAP BRG SUPRT 910PPG, DIECAST, MACHINED
4	1	SCREWB-32HC0625SS	90704023	-	BOLT, HEX 8-32 X 5/8 SZ
3	1	TB090	80040019	I	BOARD, SENSOR ASSY TECHNOBEAM
2	1	SY414	80010077	I	BOARD, DUAL SENSOR STC
1	1	9106PPG	90719007	I	BEARING, TECH 6006-2RSNR STC

UNLESS OTHERWISE SPECIFIED: RELEASE DATE: 5 APRIL 00 CC: _____
 ENG: WES LANE
 DIMENSIONAL TOLERANCES: 1 PLACE DECIMALS = ± .010
 2 PLACE DECIMALS = ± .005
 3 PLACE DECIMALS = ± .005
 ANGLES = ± .1°
 FOR PAINTED PARTS REFER TO ENG. SPEC. MANUAL W1-0592
 MATERIAL: CHARTED
 FINISH: NA
 MIN. DRAFT NA
 W/LR. DRZ(1) NA
 FLATNESS NA
 THICKNESS NA
 VOLUME NA

DESCRIPTION: ASST. LOWER BEARING, STUDIO BEAM
 DRAW: VILLARREAL
 SHT: D PART NO: NA
 UNLESS OTHERWISE SPECIFIED INTERPRET DIMENSIONS PER ASME Y14.5M-1994
 DIMENSIONS ARE IN INCHES
 DRAWING USES THIRD ANGLE PROJECTION

High End 2209 WEST BRAKER LANE
 AUSTIN, TEXAS 78758
 (512) 932-9300
 FAX (512) 832-8542
 http://www.highend.com

Lightwave Research

DO NOT SCALE DRAWING SCALE: 1.000 SHEET: 1 OF 1

DRAWING NO: SWA176 REV: 3

PROPRIETARY NOTICE:
 THIS DOCUMENT CONTAINS CONFIDENTIAL AND PROPRIETARY INFORMATION OF HIGH END SYSTEMS INC., (ALSO DBA LIGHTWAVE RESEARCH) AND IS GIVEN TO THE RECEIVER IN CONFIDENCE.
 THE RECEIVER ACCEPTS AND AGREES THAT, EXCEPT AS AUTHORIZED BY HIGH END SYSTEMS, THE RECEIVER WILL NOT PERMIT THE USE OF THIS DOCUMENT OR ANY COPY THEREOF OR THE INFORMATION THEREIN, WILL NOT COPY OR PERMIT COPYING THE DOCUMENT WILL NOT DISCLOSE TO OTHERS EITHER THE DOCUMENT OR THE INFORMATION THEREIN, AND WILL UPON COMPLETION OF THE NEEDS TO RETAIN THE DOCUMENT, OR UPON DEMAND, RETURN THE DOCUMENT WITHOUT RETAINING ANY OF THE INFORMATION CONTAINED THEREIN IN ANY FORM WHATSOEVER.